

**judges**  
creating memories since 1902



# flora & fauna

by Beth Tibbles

Bespoke artwork for the wildlife in your location



# How it works

Let's work together to create a Flora and Fauna range for your location.

There are 4 design elements, on pages 4-7:

- Plants
- Birds
- Insects
- Animals

You can select any 12 of these icons to make up your design.  
If there is a particular plant, bird, insect or animal you would like to include, we will create one new icon for you, at no extra charge.\*

We finish the design off with your title or place name.

Our design team will then create artwork proofs of each product on your order. Once approved, our production team will make your products and despatch them to your door. This normally takes a further 4 weeks.

Each order is delivered with a point-of-sale package to help you promote the range in your retail space – see page 18.

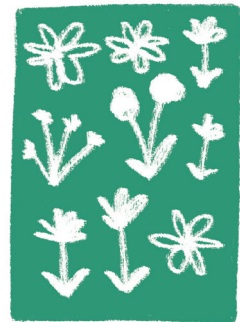
Step 1  
Let's create a brief



Step 2  
Place an order



Step 3  
Design and proof



Step 4  
Manufacture in house



Step 5  
Delivery



Step 6  
You sell your range



## Important bits

To cover the design and set up charges we ask that you place a minimum initial order of £750 +VAT.

\*One new icon is free of charge.

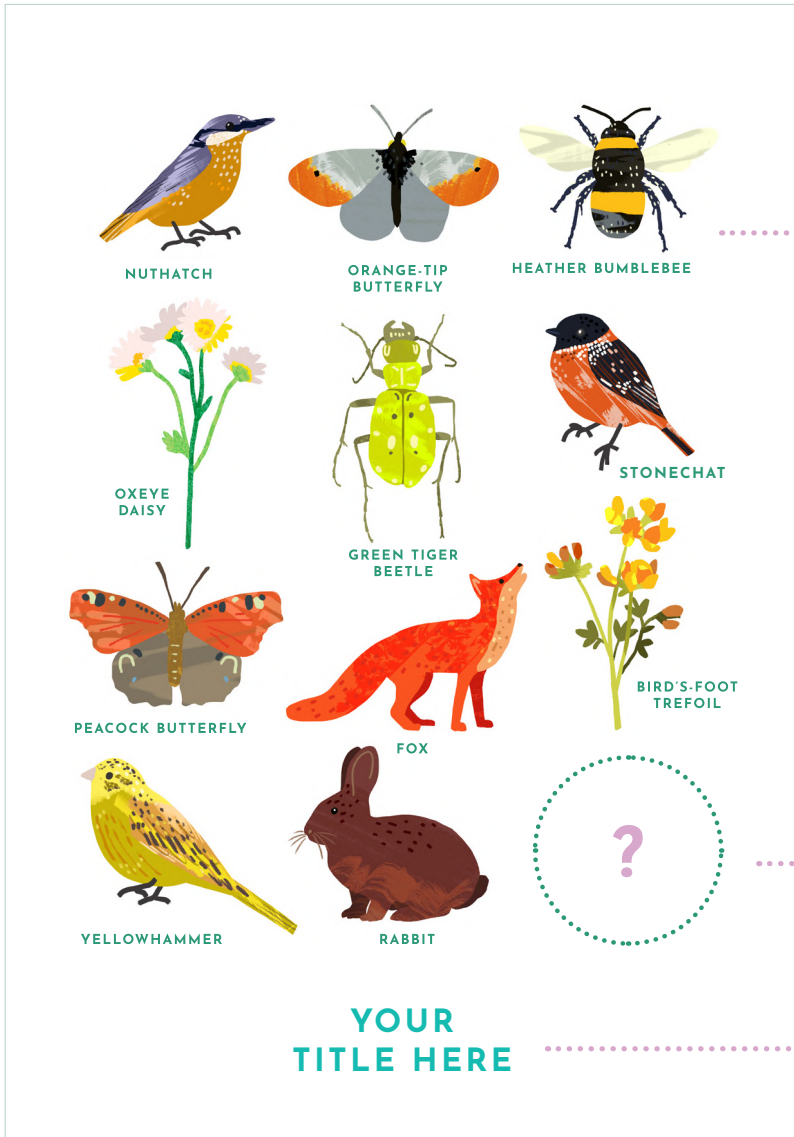
Second and subsequent new icons are charged at £35 each.

The price includes up-to two amendments to the artwork at the design and proofing stage. Thereafter they will cost £50 + VAT per amendment

In the unlikely event that you decide to cancel the order after the artwork has been created a cancellation charge of £250 +VAT will be incurred, this will be offset should the order be reinstated.

# How it works

Here is an example of a design using our range of icons from pages 4-7, adding your own icon and a title.



Select from our standard icons on pages 4-7

Or we can draw icons of your choosing

Choose your title

How you can customise your packaging by adding your details/logo to the reverse. (mug swing tag example)



Front



Back

# Choose your icons | Plants

Or we can draw  
icons of your  
choosing



Dog Violet



Bird's-Foot Trefoil



Foxglove



Oxeye Daisy



Wild Garlic



Red Clover



Yellow Archangel



English Bluebell



Yarrow

# Choose your icons | Birds

Or we can draw  
icons of your  
choosing



Yellowhammer



Skylark



Nuthatch



Treecreeper



Bullfinch



Stonechat



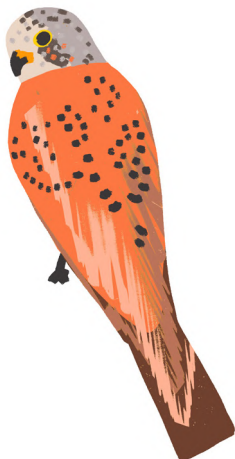
Raven



Great-Spotted  
Woodpecker



Buzzard



Kestrel



Linnet



Goldcrest

# Choose your icons | Insects

Or we can draw  
icons of your  
choosing



Green Tiger Beetle



Orange-Tip Butterfly



Elephant Hawk Moth



Ant Mimic Jumping Spider



Heather Bumblebee



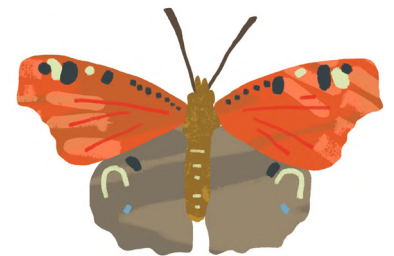
Rosel's Bush-Cricket



Speckled Wood Butterfly



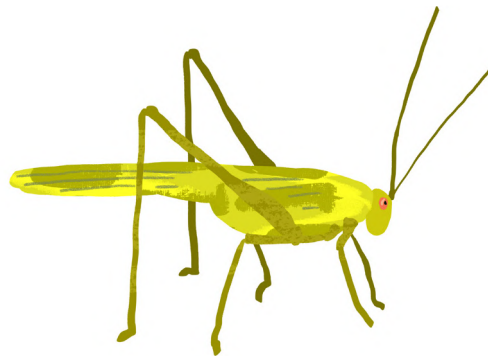
Minotaur Beetle



Peacock Butterfly



Long Horned Bee



Sickle-Bearing-Bush-Cricket



Webb's Wainscot

# Choose your icons | Animals

Or we can draw  
icons of your  
choosing



Stoat



Badger



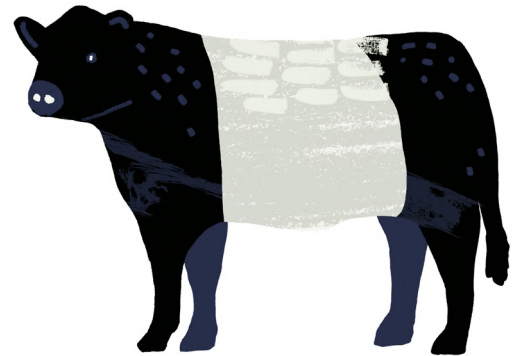
Weasel



Fox



Rabbit



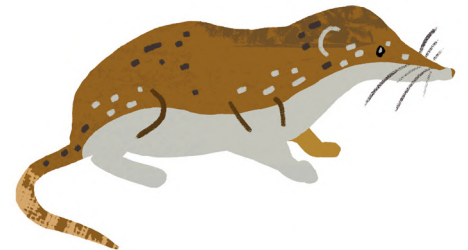
Cow



Mole



Pipistrelle Bat



Common Shrew



Wood Mouse



Field Vole



Hedgehog

# Products

Range created for  
The Bale House, Hastings





# Products

## Art print framed

Print size: 11 x 14" | Frame size: 31 x 39cm

ARTPRINT02

MOQ: 10

Supplied full colour print with black frame and small information sticker on the reverse.



## Ceramic mug

Size: 8.3 x 9.5cm, 11oz



MUGCER02

MOQ: 72

Barcode printed on swing tag.

## Enamel mug with silver rim

Size: 8 x 7.8cm



MUG02

MOQ: 48

Barcode printed on swing tag.

## Our mugs

Both our premium coated mugs are hand decorated by us in UK, they are dishwasher safe, and the ceramic mug can be placed in the microwave.

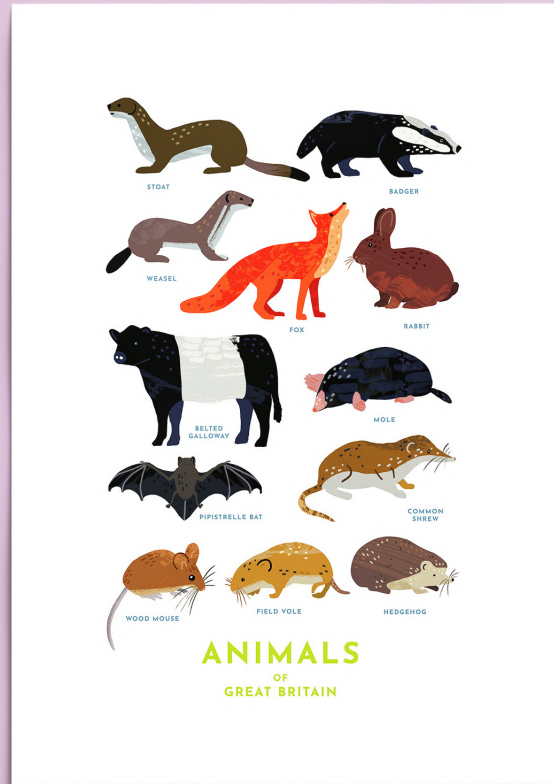
# Products

## Art print

Size: 11 x 14"

ARTPRINT01

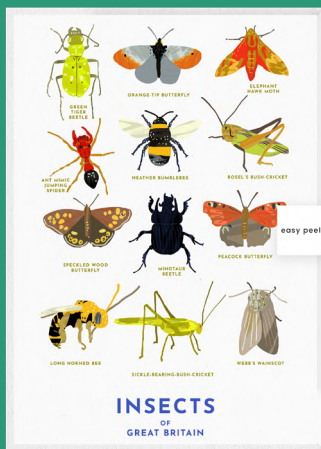
MOQ: 25



Supplied full colour print and premium grade white backing card in a cello bag, with small information sticker on the reverse.

## Greeting card

Size: 15.5 x 10.8cm



Easy peel sticker

GRE015B

MOQ: 100

Supplied full colour front, blank inside. Barcode printed on reverse. Supplied with white envelope and plastic free sticker packaging.

## Postcard

Size: 14.8 x 10.5cm



PC01

MOQ: 100

Supplied full colour front, standard postcard reverse with barcode.

# Products

## Tote bag

Size: W37 x H42 x D11cm



BAG02

MOQ: 50

10oz natural cotton. 100% cotton.  
Supplied full colour front, blank on reverse.  
Barcode printed on swing tag.

## Our fabric printing

Our fabric products form a high quality backdrop for your design. They are made from natural 100% heavyweight cotton which is pre-washed to achieve superior print quality. They are manufactured in a Fair-Trade certified factory in India and printed by us in UK.

# Products

## Tea towel

Size: 44 x 64cm / 100% 8oz natural cotton



TEA02

MOQ: 50

Supplied full colour front, blank on reverse.  
Folded and supplied with belly band packaging with barcode on reverse.



## Four badges

Size: 3.8cm



BAD04

MOQ: 100

Presented on a backing card with barcode on reverse.

# Products

## Coaster

Size: 9.5 x 9.5cm



COA02MT

MOQ: 108

Supplied full colour front, cork on reverse. Presented in card wrap with barcode on reverse.

## Pencil tube

Size: 19.5 x 3.5cm diameter



PENSET01

MOQ: 72

Supplied full colour, with barcode. Contains 12 colouring pencils in natural wood.



## Set of 4 coasters

Size: 9.5 x 9.5cm

COA05MT

MOQ: 54

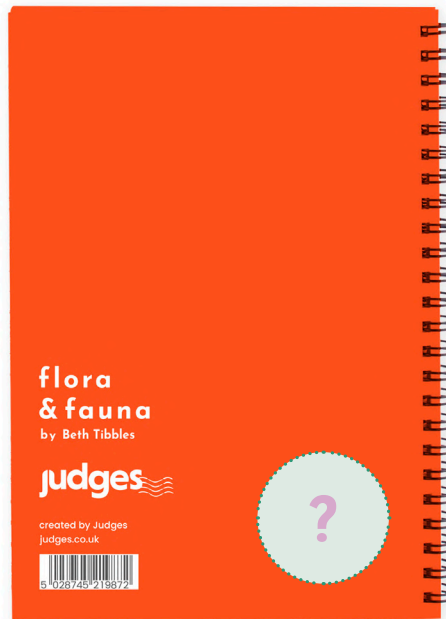
Supplied full colour front, cork on reverse. Packed in card display box with barcode on reverse.



# Products

## A5 hardback notepad

Size: 14.8 x 10.5cm



Your details/  
logo on the  
reverse

NOT04

MOQ: 50

Supplied full colour front and back. 70 pages of lined paper. Inside covers printed one solid colour that matches the design. Supplied loose, barcode printed on reverse.

## Magnetic memo pad

Size: 21 x 10cm / 100gsm, 40pp



NOT07

MOQ: 100

Supplied full colour front, 40 pages. Magnets on reverse of backing card. Packed in belly band with barcode on reverse.

## Three A5 stapled notebooks

Size: 14.8 x 10.5cm



NOT11

MOQ: 100

Supplied full colour front. 36 pages, one lined, one plain and one with graph paper. Packed in a belly band with barcode on reverse.

## About us

We have been printing for 120 years from our historic base in Hastings. We now have Heidelberg lithographic equipment together with state-of-the-art digital printers and all our design and finishing takes place under the same roof.



# Products

## Sticker sheet

Size: 16 x 14cm



STICA5

MOQ: 100

Packed in biodegradable cello bag with header card and barcode on reverse.

## Photostone keyring

Size: 2.8 x 4cm



KEY04

MOQ: 100

Supplied full colour front, blank on reverse. Barcode printed on reverse of hang tag.



## Large tin plate magnet

Size: 6.5 x 9cm



MAGTIN05MT

MOQ: 100

Supplied full colour front with matt finish, blank on reverse. Barcode printed on reverse of packaging.

## Card bookmark

Size: 18 x 5cm / 300gsm



BOO02

MOQ: 100

Supplied full colour front on 415 micron card, barcode printed on reverse.





# Products

## White t-shirt

Size: XS, S, M, L, XL, XXL

TSH02

MOQ: 50, at least 10 of each size

Supplied full colour front, blank on reverse.  
Packed with a swing ticket with barcode on reverse.



## Our T-shirts

Our shirts are printed by us on 190gsm, 100% semi-combed ring spun white cotton. They have a ribbed collar, taped neck, twin needle stitching and a tubular body.



# Point of sale

We will also send you a package with free point of sale items to help you display and promote your range.

In your exclusive pack you will get:

- Framed print of your design
- A4 show card
- Thank you card

“Thank you for your order”



## Flora & Fauna welcome pack



# Our process



From artwork to despatch... Everything you see in this brochure is produced in our iconic factory situated just off the seafront in (usually) sunny Hastings.

We value the ability of our team to work under the same roof, from Beth producing the original artwork to Tash assembling your products and despatching them out the door. We like to feel that we can iron out any queries quickly and we get the best possible results from our creativity and manufacturing skills.



Gavin, was first introduced to the Judges family when he joined us on a work experience placement from school and now heads up our print division over seeing our Heidelberg printing press and state of the art Xerox digital unit.

Please call by if ever you are passing, we might even treat you to a bag of chips on the beach!



# Sustainability



Our printing inks are made from vegetable oils



The paper for our envelopes and the board we print on comes from well managed, sustainable and accredited sources



All our waste printing board and cardboard are sent for recycling. Our general waste is zero landfill



Our whole factory and office suites run on low energy lights



Our heating system has been upgraded to high efficiency boilers



As all of our design and production happens under one roof there is no need for unnecessary transportation of stock

# About us

## Judges

Designers and manufacturers of exclusive gift ware.

Based on the photographic excellence of Fred Judge FRPS, Judges was founded in Hastings in 1902 and quickly established itself as one of the country's leading publishers of postcards, opening branches throughout the UK.

During his lifetime he won over 100 trophies, exhibited in America, Australia, Japan and New Zealand. He was specially honoured with one man shows in London, New York and Washington and had 83 acceptances in the annual exhibitions of the Royal Photographic Society

In 1927 Fred relocated the business from the town centre to its current iconic premises, over the decades the building was expanded, equipment modernised and today the company upholds Fred's ethos of creativity and quality to cater for modern demands.



## Contact

We are always happy to discuss any aspect of the design and production process.

Our office is open Monday- Friday 8.15-5.0pm and our sales@ emails are monitored outside these hours.

 [judges.co.uk](http://judges.co.uk)

 [sales@judges.co.uk](mailto:sales@judges.co.uk)

 01424 420919

 [facebook.com/judgesofhastings](https://facebook.com/judgesofhastings)

 [judgesofhastings](https://judgesofhastings)





Range created for  
The Bale House, Hastings





# flora & fauna

by Beth Tibbles

Creative gifts for your location